



2012
Northwest
Medical Laboratory
Symposium



AMERICAN SOCIETY FOR CLINICAL LABORATORY SCIENCE, REGION IX
ASCLS-WASHINGTON
ASCLS-OREGON

AMERICAN MEDICAL TECHNOLOGISTS, WESTERN DISTRICT
OREGON STATE SOCIETY OF AMERICAN MEDICAL TECHNOLOGISTS
NORTHWEST STATE SOCIETY OF AMERICAN MEDICAL TECHNOLOGISTS

Holiday Inn, Portland Airport
Portland, OR
October 17 - 20, 2012

Welcome to the 2012 Northwest Medical Laboratory Symposium

It won't be long until the leaves on the trees begin showing their glorious fall colors, the temperatures begin cooling off and the prime autumn opportunity for continuing medical laboratory education and professional networking is upon us. The NWMLS committee, composed of medical laboratory professionals from throughout the northwest, has once again planned a dynamic program. The American Society for Clinical Laboratory Science (ASCLS) and the American Medical Technologists (AMT) invite you to join us in Portland, OR for this year's Symposium October 17 – 20, 2012.

Our clients, patients and colleagues in the allied health professions rightfully expect and deserve for us, as medical laboratory professionals, to maintain our professional credentials and competency. One means of doing this is to stay abreast of the latest developments in technology and testing. The NWMLS provides an excellent means of accomplishing this responsibility. Seminars covering topics in every aspect of laboratory medicine, from research to testing to management, are provided during this outstanding Symposium.

In addition to educational opportunities you will not want to miss out on the chance to network with fellow laboratorians. This is your opportunity to gain refreshing encouragement from other medical laboratory professionals who are facing the same issues you face on a day to day basis.

Not to be missed is the Exhibit Hall. This opportunity to meet laboratory industry vendors face to face and learn of the latest technological developments is always a highlight of the NWMLS. These industry representatives are available for you to visit with in a low intensity setting. They will be happy to hear and respond to your questions. Please thank them for their continuing support of the NWMLS in the sponsorship of our speakers and breaks.

Please seriously consider this sincere invitation to join us at the Holiday Inn, Portland Airport Columbia Convention Center for this year's Symposium. We look forward to seeing you there.

Kenneth Hawker
AMT Western District Councillor

Shellie Smith
Director, ASCLS Region IX

The 2012 Northwest Medical Laboratory Symposium Program and registration form are available on the Internet at the following URL

www.asclswa.org

Updates and other information will be provided through this site.

Table of Contents

| | |
|---|----|
| Welcome | 2 |
| Committees and Officers | 4 |
| General Information | 5 |
| Hotel. | 6 |
| Wednesday Sessions | 8 |
| Thursday Sessions | 12 |
| Friday Sessions | 17 |
| Saturday Sessions. | 22 |
| Exhibits | 26 |
| Registration Terms and Conditions | 28 |
| Registration Form | 29 |
| ASCLS Membership. | 30 |
| AMT Request For Membership | 30 |
| Special Notes | 31 |
| At A Glance | 32 |

Handouts ONLY Available On-line

To keep registration rates as low as possible, the NWMLS will no longer provide copies of the session handouts on-site at the meeting. Session handouts will be available for download at the ASCLS-WA website (<http://www.asclswa.org>). Click on the "NWMLS" tab. Remember to print copies of the handouts for the sessions for which you registered and bring them to the meeting with you. **No handouts will be provided onsite.** If you are having problems downloading the handout, please contact Brenda Kochis, BrenKoch@comcast.net.

Handouts for the sessions will be available on the ASCLS-WA website approximately 2 weeks prior to the meeting in a password protected area. You will receive the "password" and instructions on how to print the handouts approximately 2 weeks before the meeting. The email will be from BrenKoch@comcast.net, so watch for it. Register early so that you can print the handout material for your sessions. Handouts will NOT be provided for those that register onsite.

Luncheon for Student and First Year Professionals

Saturday, October 20, 2012, 12:00 - 1:00 pm
Holiday Inn, Portland Airport

Current MLT/MT students and recent MLT/MT graduates (within 5 years) from Region IX will meet. Current employment opportunities, job outlook, and interview process will be discussed. An update on certification maintenance and CE organizer will also be given.

This is open to student and FYP registrants attending the NWMLS.

Your Hosts will be
Maja Chloupkova
Legacy Health System
ASCLS-OR First Year Professional

Beth Zentzis
OHSU*OIT Student

NWMLS Committee

| | |
|----------------|------------------------------------|
| General Chair | Heidi Smith Sharon Laddusaw |
| Program | Tracee Demcak |
| Exhibits | Brenda Kochis |
| Registration | Edna Anderson Audrienne Whitley |
| Program Design | Brenda Kochis |
| Finance | Mary-Helen Carroll |
| AV | Helen Wand Marilyn Albertsen |
| P.A.C.E. | Joan Pankonin |
| AMTrax | Louise Isbell |
| Hospitality | Michelle Flores |
| Webmaster | Brenda Kochis |

ASCLS - Region IX

Regional Director Shellie Smith

Region IX Forum Friday, October 19, 2012
6:00 - 7:30 PM

ASCLS-OR

| | |
|-----------------|--------------|
| President | Heidi Smith |
| President Elect | Open |
| Secretary | Helen Wand |
| Treasurer | Krista Moore |

ASCLS-OR Board Meeting

Friday, October 19, 2012 Follows Region IX Forum

ASCLS-Washington

| | |
|-----------------|---|
| Co-Presidents | Donna Reinbold Molly Morse Toni Okada |
| President Elect | Sigrid Redmond |
| Secretary | Sue Seegers |
| Treasurer | Shawna Martin |
| Past President | Marianne Strnad |

ASCLS-WA Board Meeting

Friday, October 19, 2012 Follows Region IX Forum

CLSA

| | |
|-----------------|------------------|
| President | Shannon Billings |
| President Elect | Holly Berg |
| Past President | Constance Stager |

Western District of American Medical Technologists Officers and Business Meetings

Western District Councillor Kenneth Hawker, MT(AMT)

ORSSAMT

| | |
|----------------|-------------------|
| President | Louise Isbell |
| Secretary | Audrienne Whitley |
| Treasurer | Edna Anderson |
| Past President | Marilyn Albertsen |

OSSAMT Board Meeting Thursday, Oct 18, 6:30 am

OSSAMT Business Meeting Friday, Oct 19, 6:00 pm

NWSSAMT

| | |
|----------------|------------------|
| President | Jo Abraham |
| Vice President | Theresa Indovina |
| Secretary | Linda Wilkins |
| Treasurer | Roxanne Erskine |

NWSSAMT Board Meeting and Business Meeting

Friday, Oct 19, 2012, 6:00 pm

Did You Know?

P.A.C.E. / AMTrax Contact Hours are available for attending the Exhibits. All you have to do is correctly answer 20 or more on a 31 question quiz that we give you before you go into the Exhibits. The answers to these questions are available at the various booths. And you don't have to rush, since the questions can be answered over more than one Exhibit session. Great way to earn 2.0 contact hours at no charge.

General Information

Registration Hours

| | |
|-----------|---|
| Wednesday | 7:30 AM - 8:30 AM 2:00 PM - 2:30 PM |
| Thursday | 7:30 AM - 8:30 AM 2:00 PM - 2:30 PM |
| Friday | 7:30 AM - 8:30 AM 2:00 PM - 2:30 PM |
| Saturday | 7:30 AM - 8:30 AM 12:30 PM - 1:00 PM |

Coffee Breaks

Fifteen minutes each

| | |
|-----------|--|
| Wednesday | 10:00 AM - 10:15 AM 4:00 PM - 4:15 PM |
| Thursday | 10:00 AM - 10:15 AM 4:00 PM - 4:15 PM |
| Friday | 10:00 AM - 10:15 AM 4:00 PM - 4:15 PM |
| Saturday | 10:00 AM - 10:15 AM 2:30 PM - 2:45 PM |

Exhibit Hours

| | |
|-----------|--------------------|
| Wednesday | 12:00 PM - 2:30 PM |
| Thursday | 12:00 PM - 2:30 PM |
| Friday | 12:00 PM - 2:30 PM |

Session Accreditations

P.A.C.E.® and AMTrax credits have been approved for all appropriate sessions. ASCLS-OR is approved as a provider of continuing education programs in the clinical laboratory sciences by the ASCLS P.A.C.E.® Program. ASCLS-OR will be using CE Organizer for documentation of continuing education credits. Please make note of the P.A.C.E.® number and of the session number that will be given to attendees in each session after the session break. Without this information, the attendee will not be able to obtain their electronic certificate.

ORSSAMT is the approved provider for AMTrax CECs and insures that these educational presentations conform to standards established by AMTrax.

Lunch

| | |
|-----------|---------------------|
| Wednesday | 11:45 AM - 12:45 PM |
| Thursday | 11:45 AM - 12:45 PM |
| Friday | 11:45 AM - 12:45 PM |
| Saturday | 12:00 - 1:00 PM |

Note: Lunch is provided only with full-day pre-registrations. Either an all-day session or two half-day sessions on the same day constitute a full-day registration. **Lunch is not provided with half-day registrations, or with on-site registrations.** A full-day is a morning and afternoon session on the same day only.

Session Times

| | |
|-----------|---|
| Wednesday | 8:30 AM - 11:45 AM 2:30PM - 5:45 PM |
| Thursday | 8:30 AM - 11:45 AM 2:30PM - 5:45 PM |
| Friday | 8:30 AM - 11:45 AM 2:30PM - 5:45 PM |
| Saturday | 8:30 AM - 11:45 AM 1:00 PM - 4:15 PM |

Holiday Inn, Portland Airport

HOLIDAY INN
PORTLAND AIRPORT
8439 NE Columbia Blvd,
Portland, OR (503) 256-5000



Hotel Information

Room Rates:

\$ 92.00 Single/Double Occupancy

\$102.00 Triple/Quad Occupancy

plus fees, taxes and assessments , currently
12.5%.

Check-in time is 3:00 PM and check-out time is
12:00 noon.

To Make a reservation, please call the hotel at 503-256-5000. State that you are with the Northwest Medical Laboratory Symposium to obtain the conference rates. Note that these rates are only available until September 21, 2012. After that the hotel reserves the right to charge their normal rack rate.

Holiday Inn, Portland Airport



HOLIDAY INN
PORTLAND AIRPORT
8439 NE Columbia Blvd,
Portland, OR (503) 256-5000

Exhibit Hall
Columbia Conference Center
near the Holiday Inn, Portland Airport

From the South:

Take I-5 North to I-84 East to I-205 North (Portland Airport/Seattle exit 8) to Exit 23B (US 30 West By Pass/Columbia Blvd). Turn right at the end of the exit, stay in the right lane. Just before the second traffic light turn right onto NE Columbia Blvd.

From South of Wilsonville:

Take I-5 North to I-205 North to Exit 23B (US30 West By Pass/Columbia Blvd.). Turn right at the end of the exit; stay in the right lane. Just before the second traffic light turn right onto NE Columbia Blvd.

From the North:

Take I-5 South to I-84 East to I-205 North (Portland Airport/Seattle exit) to Exit 23B (US 30 West By Pass/Columbia Blvd.) Turn right at the end of the exit; stay in the right lane. Just before the second traffic light turn right onto NE Columbia Blvd.

From North of Vancouver, WA:

Take I-5 South to I-205 South to Exit 23B (US 30 West By Pass/Columbia Blvd.) Turn right at the end of the exit. Just before the traffic light turn right onto NE Columbia Blvd.

From the West:

Take US 26 East to I-84 East to I-205 North (Portland Airport/Seattle exit) to Exit 23B (US 30 West By Pass/Columbia Blvd.) Turn right at the end of the exit; stay in the right lane. Just before the second traffic light turn right onto NE Columbia Blvd.

From the East:

Take I-84 West to Exit 9 (Seattle/Portland Airport) to I-205 North to Exit 23B (US 30 West By Pass/Columbia Blvd.) Turn right at the end of the exit; stay in the right lane. Just before the second traffic light turn right onto NE Columbia Blvd.

Airport Shuttle

The Holiday Inn Portland Airport provides complimentary airport shuttle service 24 hours a day, on demand. In the Baggage Claim area, call the hotel. Then walk from the Baggage Claim outside to Area 4 where the shuttle should arrive in 10 to 15 minutes after your call.

Session # 1

8:30 AM - 11:45 AM
3 Contact Hours
Intermediate

Role of Proficiency Testing in Laboratory Quality

CLIA regulations mandate PT participation for a list of analytes, the grading criteria for acceptable performance, and the “rules” that participants must explicitly follow. Despite the known limitations of the PT samples and process, PT data still are beneficial to laboratories, regulators and accreditation bodies. For the laboratories, PT data provides independent verification of analytical and technical competence and aides in instrument/method selection. While PT participation is a major component of a laboratory’s quality assessment, there are no comprehensive studies clearly establishing PT as an effective indicator. This became obvious with the 2004 Maryland General Hospital scandal, where for 14 months, up to 460 questionable HIV and hepatitis tests were reported despite acceptable PT performance. As a result, the Government Accountability Office (GAO) and the Centers for Disease Control and Prevention (CDC) were asked to investigate. The CDC 2008 report lists 21 recommendations to improve PT including: addition of more laboratories (currently waived testing is not included in the process), expansion of the number of “regulated” analytes, changes in data collection and analysis, process improvement and evaluation, and education to change current laboratory practices. The future for PT in the U.S. may be different! Only time will tell.

At the end of this session, participants will be able to:

- ✓ Describe the value of PT participation as a component of quality assessment
- ✓ Discuss the limitations/pitfalls of proficiency testing’s external quality assessment
- ✓ Predict the future role and value of PT participation

Point of Care Strategies to Meet the Regulations: CLIA, CAP, TJC

If you are a Point of Care Coordinator or supervisor and are planning for POCT’s next inspection or survey, this session is for you. This presentation will provide you with an up-to-date insight for getting ready for the inspector and the latest POCT regulations. In addition, strategies are provided to successfully comply with the numerous and often confusing regulations and to find and correct problems before inspection. The DOs and DON’Ts of these sure-fire strategies will have you meeting the surveyor/inspector with confidence and success!

At the end of this session, participants will be able to:

- ✓ Describe the latest POCT requirements for inspection readiness
- ✓ Discuss common pitfalls for inspection failure
- ✓ Develop strategies to avoid inspection failure
- ✓ Create an appropriate game plan for successfully meeting the regulations and inspector/assessor

SHARON S. EHRMEYER, Ph.D., MT(ASCP)

Professor, Pathology and Laboratory Medicine
University of Wisconsin School of Medicine and Public Health
Madison, WI



Wednesday, October 17, 2012

Session # 2

8:30 AM - 11:45 AM
3 Contact Hours
Intermediate

Impact of On-Demand PCR Testing

A basic level description of Cepheid's GeneXpert technology and menu offering is this session's focus. Discussed will be the impact of on-demand PCR technology and how it can transform processes inside and outside of laboratory.

At the end of this session, participants will be able to:

- ✓ Describe the value of the GeneXpert technology, and
- ✓ Describe the impact of on-demand real time PCR analysis.

KIM GILONSKE, CLSP(MB), MT(ASCP), CLS(NCA)

Manager, Systems and Solutions
Cepheid
Sunnyvale, CA

Sponsored by Cepheid

Session # 3

8:30 AM - 11:45 AM
3 Contact Hours
Intermediate

A Research and Clinical Trial Primer

"A research and clinical trial primer" will cover the basics of conducting research from a regulatory perspective. It will cover the basics of clinical trial regulations in a historical context.

At the end of this session, participants will be able to:

- ✓ Describe research guidance including the Nuremburg Code, the Declaration of Helsinki, and the Belmont report,
- ✓ Describe events leading up to the development of research guidance,
- ✓ Describe 2-3 areas of concern in current clinical and non-clinical research, and
- ✓ Discuss the basic requirements for opening a research study

MARK SCHUSTER, MS, CIP

Regulatory Manager
Providence Health & Services
Portland, OR

Don't Forget!

Visit the Exhibits

12:00 to 2:30 PM

Do you have your P.A.C.E. / AMTrax questions?

Session # 4

2:30 - 5:45 PM
3 Contact Hours
Intermediate

Acute Lymphoblastic Leukemia

The history of modern day treatment and diagnosis using Minimal Residual Disease protocol will be discussed in this session.

At the end of this session, participants will be able to:

- ✓ Outline the history of the treatment of acute lymphoblastic leukemia,
- ✓ Describe diagnostic tests for acute lymphoblastic leukemia, and
- ✓ Discuss the clinical significance of Minimal residual disease detection

GUANG FAN, MD

Medical Director
Oregon Health & Science University
Portland, OR

Session # 5

2:30 - 5:45 PM
3 Contact Hours
Intermediate

Blasts and Other Disturbing Cells I Have Known and Loved!

Do those peripheral blood smears containing cells you don't see everyday intimidate you? I get it! Using a case study approach this session will review the morphology of many of these tougher, younger cells. You will see a lot of microscopic images, and you'll be looking for patterns to help you associate these troublesome cells with the probable cell type and hence diagnosis.

At the end of this session, participants will be able to:

- ✓ More confidently identify immature cells, including blasts, and classify them according to cell lineage
- ✓ Identify other characteristic CBC and morphologic patterns that indicate suspect cells are indeed blasts
- ✓ List and recognize peripheral blood characteristics that will help to differentiate blasts from cells seen in reactive blood pictures.

LYNN MAEDEL, MS, MLS(ASCP)SH^{CM}

Executive Director
CACMLE, Inc. (Colorado Association of Continuing Medical Laboratory Education)
Denver, CO

Diagnosis and Clinicopathologic Spectrum of Infectious Mononucleosis and Other EBV Associated Disorders

We will review characteristics of EBV associated infectious mononucleosis including the clinical and laboratory correlation required in establishing the diagnosis; will discuss peripheral blood findings as well as basic lymph node patterns associated with primary EBV infection; will touch briefly on the large variety of EBV associated lymphoproliferative disorders

At the end of this session, participants will be able to:

- ✓ Describe the significance of testing in infectious mononucleosis including EBV serologies and viral load,
- ✓ Recognize characteristic peripheral blood findings and
- ✓ Describe the large variety of EBV associated lymphoproliferative disorders

NICKY LEEBORG, MD

Assistant Professor in Department of Pathology
Oregon Health & Science University
Portland, OR

Molecular Approaches for the Detection of Agents of Communicable Diseases at the Oregon State Public Health Laboratory

Molecular test methods currently utilized at the Oregon State Public Health Laboratory will be presented in theory and application. These molecular methods include but are not limited to PCR, real-time RT-PCR, Sequencing, and Pulse Field Gel Electrophoresis. The importance of the results obtained from these test methods in communicable disease testing, outbreak investigations, disease surveillance and bioterrorism agent testing will be discussed.

At the end of this session, participants will be able to:

- ✓ Identify the molecular test methods currently performed at OSPHL and potential agents identified by these methods.
- ✓ Discuss the basic technologies utilized for each test method.
- ✓ Recognize the important roles these test methods serve for disease surveillance, outbreak investigations, and the detection and identification of bioterrorism threats.
- ✓ Describe the partnership between the public health laboratories and the Centers for Disease Control (CDC) that serves to train, support, and fund many of these molecular testing projects.

LADONNA M. GRENZ, MS

Lead Microbiologist, Virology and Immunology Section
Oregon State Public Health Laboratory
Hillsboro, OR

Newborn Screening Lab Issues

Specimen collection and lab issues in Newborn Screening will be the focus of this section. We will cover questions such as: What is a good specimen; Why do I have to fill the form out by hand; How many tests are done on one sample; and Why do I get false positives?

At the end of this session, participants will be able to:

- ✓ Describe a good specimen,
- ✓ Define why the form needs to be filled out by hand,
- ✓ List the tests are done on one infant's sample and why there are false positives, and
- ✓ List eight disorders screened by NBS.

DAVID SESSER, BA

Technical Specialist
State of Oregon Public Health Laboratory
Hillsboro, Oregon

BECKY J. WHITTEMORE, MN, MPH, FNPNW

NW Newborn Screening Program
Oregon State Public Health Laboratory
Oregon Health & Science University
Portland, OR

Sponsored by the NW Regional Newborn Screening Program

Thursday, October 18, 2012

Session # 7

8:30 AM - 11:45 AM
3 Contact Hours
Intermediate

CLIA Update: Competency and EP23

The first half of the session, the instructor will discuss the rationale for competency requirements, CLIA competency regulations and procedures, and guidance for compliance. The instructor will go over the six evaluation criteria in Subpart M; who has authority for competency assessment for laboratory testing personnel; laboratory directory's responsibilities, and delegation of authority. At the second half of the session, the instructor will give an overview of EP23, Laboratory Quality Control Based on Risk Management and how to do a risk assessment in your laboratory.

At the end of this session, participants will be able to:

- ✓ Describe the CLIA requirements for competency assessment and delegation of authority regarding competency.
- ✓ Discuss the six evaluation criteria for competency assessment.
- ✓ Discuss the CLSI EP23 document.
- ✓ Describe how risk assessment is done on a test system.
- ✓

FRANCISCA L LEHR, MS, MT(ASCP)

Laboratory Surveyor and Consultant
Centers for Medicare and Medicaid Services, Region X (CMS)
Seattle, WA

Sponsored by the Centers for Medicare & Medicaid Services Region X

Session # 8

8:30 AM - 11:45 AM
3 Contact Hours
Intermediate

Thyroid Disorders

This speaker will go over several types of thyroid problems, explain laboratory procedures and treatments and how the other hormones in the body relate. A few case studies will be offered, as well.

At the end of this session, participants will be able to:

- ✓ Identify lab tests ordered for various thyroid disorders,
- ✓ Describe the signs and symptoms and lab ranges seen in hypothyroidism, hyperthyroidism, Hashimoto's thyroiditis and Grave's Disease,
- ✓ Identify commonly related other conditions found in thyroid patients, and what lab evaluations are used to identify them, and
- ✓ Describe the ways that history taking, lab results, and physical exams are used to help individualize treatment plans for thyroid disease patients.

Susan Allen, ND
Triangolo Family Clinic
Portland, OR

Session # 9

8:30 AM - 11:45 AM
3 Contact Hours
Intermediate

Those Bodacious Body Fluids

They don't have to be that scary! It's just that most of us don't get enough practice examining body fluid cytospin preparations. This presentation will provide participants with key morphologic characteristics to help differentiate normal and reactive mesothelial cells from malignant cell morphology seen in serous body fluids. Briefly, cells seen in synovial fluids and CSF will be examined as well. You will feel better about calling these cells by the end of this session, I promise.

At the end of this session, participants will be able to:

- ✓ Identify clinically relevant microscopic elements seen in serous, CSF and synovial fluids from Wright-stained slide preparations,
- ✓ Describe the morphologic features of normal, reactive and malignant cells seen in body fluids, and
- ✓ Differentiate mesothelial and other lining cells from malignant cells seen in body fluids.

LYNN MAEDEL, MS, MLS(ASCP)SH^{CM}

Executive Director

CACMLE, Inc. (Colorado Association of Continuing Medical Laboratory Education)

Denver, CO

Don't Be Afraid, It's Just a Body Fluid

The lecture will provide a logical approach to the often feared hematologic examination of CSF, serous, and synovial fluids. The presentation will include a brief introduction into the pathophysiology of these fluids – why they are there and why we test them. A primary emphasis will be cell identification in the various fluids and differentiation of benign and malignant cells. Cell counting techniques, both manual and automated will be discussed

At the end of this session, participants will be able to:

- ✓ Identify clinically significant hematologic findings in CSF and serous fluids
- ✓ Differentiate benign and malignant body fluid cellular morphology changes
- ✓ Interpret automated body fluid cell count scattergrams and histogram

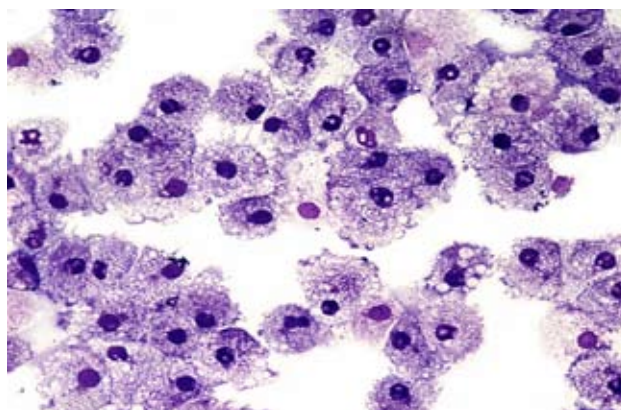
WENDY DRYMAN

Technical Solution Specialist

Symex America, Inc.

Mundelein, IL

Sponsored by Sysmex



Thursday, October 18, 2012

Session # 10

8:30 AM - 11:45 AM
3 Contact Hours
Intermediate

Flow Cytometry: Making Sense out of all the Fluorescence

This session will help introduce some of the basics of Flow Cytometry to laboratory professionals. We will cover general design of flow cytometers, basic Immunology, phenotypes of various neoplasm, and explore how cytometers are used to help evaluate diseases and therapies.

At the end of this session, participants will be able to:

- ✓ Describe the basic design of a flow cytometer,
- ✓ Discuss how we distinguish normal from abnormal in flow cytometry, and
- ✓ Describe how to distinguish between basic lymphomas and leukemias.

DAVE OSBORN, MT(ASCP)

Cytometry Consultant
Beckman Coulter, Inc.
Miami, FL

Sponsored by Beckman Coulter, Inc.

Don't Forget!
Visit the Exhibits
12:00 to 2:30 PM

Do you have your P.A.C.E. questions?

Thursday, October 18, 2012

Session # 11

2:30 - 5:45 PM
3 Contact Hours
Intermediate

An Update on Iron Metabolism

Recent advances in our knowledge about iron metabolism will be presented. Case studies will be used to illustrate the role of the laboratory in diagnosis and differentiation of blood disorders related to iron metabolism.

At the end of this session, participants will be able to:

- ✓ Identify the proteins involved in iron absorption, transport and storage.
- ✓ Explain the pathophysiology of anemia of chronic disease.
- ✓ Compare and contrast the laboratory assessment of iron status in ACD, thalassemia and IDA.

SHIRLYN B. MCKENZIE, PH.D., MLS(ASCP)^{CM}, SH(ASCP)^{CM}
Distinguished Teaching Professor; Professor Emeritus, Chair Emeritus
University of Texas Health Science Center
San Antonio, TX

Session # 12

2:30 - 5:45 PM
3 Contact Hours
Intermediate

Leading the Millennial Generation

Generational differences throughout the 20th Century, presently with the Millennial Generation, those born in the 1980s and 1990s. This unique generation is the largest generation in the US today and is taking the workplace by storm. Are you prepared to manage this group, or be managed by them?

At the end of this session, participants will be able to:

- ✓ Describe the history of Millennials and how they compare to other generations before them.
- ✓ Describe the personality of and compelling messages from Millennials.
- ✓ Discuss key methods of working with and supervising Millennials.
- ✓ Discuss managing and training techniques for Millennials.

JEFFREY B. LAVENDER, MBA, MT(AMT)
SGM, US Army (Retired); Director, American Medical Technologists
American Medical Technologists
Kalkaska, MI

Did You Know?

All of the committee members are volunteers and generously give of their time and expertise to put on our seminars. They are truly unsung heroes.

A BIG THANK YOU to all who have worked on the NWMLS.



Thursday, October 18, 2012

Session # 13

2:30 - 5:45 PM
3 Contact Hours
Intermediate

Billing for Point of Care Testing: the Good, the Bad and the Ugly

Begin by taking a short trip down Point of Care Memory Lane, and end with an overview of billing for Point of Care Testing.

At the end of this session, participants will be able to:

- ✓ Describe the History of Point of Care Testing,
- ✓ Write a Billing Plan that will work for the individual institution, and
- ✓ Describe how to get the institution excited about billing for Point of Care Testing.

ROBERT NEWBERRY, MT(AMT), MLT(ASCP), MT(HEW), POCS(AACC)

Coordinator Point of Care Testing and Laboratory Safety
Yuma Regional Medical Center
Yuma, AZ

Session # 14

2:30 - 5:45 PM
3 Contact Hours
Intermediate

Systemic and Organ-Specific Autoimmunity: Principles and Laboratory Applications

Beginning with a general description of autoimmunity, we will move to the mechanisms associated with the manifestations associated with clinical disease. The session then describes various autoimmune diseases, both systemic and organ-specific. Included is information on clinical evaluation of the patient, the role of the clinical laboratory in diagnosis and monitoring, and treatment options. The session will end with a variety of case presentations, highlighting the diagnostic challenges often faced by physicians, with discussions centered on the interpretation of relevant laboratory testing.

At the end of this session, participants will be able to:

- ✓ Describe the basic immunologic mechanisms associated with autoimmune disease,
- ✓ Identify the utility of laboratory testing for the diagnosis of autoimmune disease, and
- ✓ Interpret laboratory results for a number of specific systemic and organ-specific autoimmune diseases

MELISSA R. SNYDER, PhD

Co-Director, Clinical Immunology Laboratory
Mayo Clinic
Rochester, MN

Quick Check?

Is your Exhibits Exam done? Great way to earn 2.0 contact hours in P.A.C.E. and AMTrax. Last chance to visit the Exhibits is Friday.

Session # 15

8:30 AM - 11:45 AM
3 Contact Hours
Intermediate

The Future of Clinical Laboratory Science

This program will look at the challenging, rapidly changing but exciting future of Clinical Laboratory Science in the United States. We will examine the major changes that will take place in the Clinical Laboratory.

At the end of this session, participants will be able to:

- ✓ Describe the “WHY” in healthcare in America, “*The Times They are a Changin*”,
- ✓ Identify the “What” will need to change in the Clinical Laboratory to bring about “personalized medicine”, and
- ✓ Describe the “How” the Clinical Laboratory will look in the future.

ROBERT NEWBERRY, MT(AMT), MLT(ASCP), MT(HEW), POCS(AACC)

Coordinator Point of Care Testing and Laboratory Safety
Yuma Regional Medical Center
Yuma, AZ

Session # 16

8:30 AM - 11:45 AM
3 Contact Hours
Intermediate

Healthcare in Russia and China

The culture and health care system in Russia and China will be discussed. Emphasis will be on the issues and challenges of the laboratory professionals in these countries including education, career ladder and status.

At the end of this session, participants will be able to:

- ✓ Give the characteristics of Chinese/Russian culture.
- ✓ Describe the health systems of China and Russia including accessibility, regulations, health insurance, and concerns.
- ✓ Compare and contrast the education of Chinese/Russian medical laboratory professionals, their issues and challenges with their counterparts in the United States.

SHIRLYN B. MCKENZIE, Ph.D., MLS(ASCP)^{CM}, SH(ASCP)^{CM}

Distinguished Teaching Professor; Professor Emeritus, Chair Emeritus
University of Texas Health Science Center
San Antonio, TX

Friday, October 19, 2012

Session # 17

8:30 AM - 11:45 AM
3 Contact Hours
Intermediate

Concepts in Quality Control Data Management and QC for Infectious Disease Testing

This session will build a foundation of basic and intermediate Quality Control principles. Upon this foundation, this session will explore what are current best QC practices for Infectious Disease testing in today's laboratories.

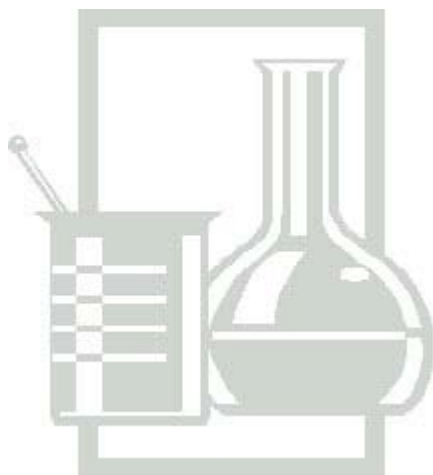
At the end of this session, participants will be able to:

- ✓ Describe basic and intermediate concepts of Quality Control and how to plan statistical QC,
- ✓ Discuss the types of errors found when evaluating QC and the resolution of those errors, and
- ✓ Discuss and review current practices of QC in serological infectious disease testing.

JOSHUA X. PULIDO, MLS(ASCP)^{CM}

Product Manager for Infectious Disease Controls
Clinical Diagnostics Group - Quality Systems Division
Bio-Rad Laboratories, Inc.
Irvine, CA

Sponsored by Bio-Rad Laboratories



Did You Know?

*Scholarships are available for
ASCLS-Washington Members.*

*Look on the website and click the Scholarships
tab. Then click on the Northwest Medical Labo-
ratory Symposium application to bring up the
application form for the memorial scholarships.
Two are available.*

*One must be a member of ASCLS-Washington to
qualify. Great way to offset the expense of attend-
ing the NWMLS.*

Friday, October 19, 2012

Session # 18

8:30 AM - 11:45 AM
3 Contact Hours
Intermediate

Myeloma Patients: New Screening Updates for Improved Outcomes

Patients with multiple myeloma (MM) and other monoclonal gammopathies often initially present with a myriad of non-specific symptoms. Traditional screening protocols miss a significant percent of patients with MM and related plasma cell disorders. The serum free light chain assay, Freelite™, is a highly specific, quantitative and fully automated approach to measure free lambda and kappa light chains in the serum and provides a sensitive indicator of patient status in the diagnosis, treatment and remission of Multiple Myeloma (MM) and other B-cell dyscrasias. Enhanced diagnostic capability has been demonstrated when sFLC testing is used in conjunction with SPEP and/or IFE. The International Myeloma Working Group (IMWG) and National Comprehensive Cancer network (NCCN) has recently developed new recommendations for the utilization of Freelite™ in the initial diagnostic workup of multiple myeloma and related disorders. This test is currently offered by major reference laboratories, myeloma centers and many hospital laboratories. The following topics will be discussed in this presentation:

The non-specific symptoms of myeloma & related plasma cell disorders that often confound a diagnosis.

- Why it is easy to miss MM diagnoses.
- An overview and evaluation of traditional screening protocols.
- Recent developments in screening algorithms for suspected monoclonal gammopathies.
- International Myeloma Working Group and NCCN Guidelines for serum free light chain analysis in multiple myeloma and related disorders.

At the end of this session, participants will be able to:

- ✓ Identify the non-specific symptoms that often accompany multiple myeloma and other plasma cell disorders,
- ✓ Explain why the traditional screening methods can miss the diagnosis of monoclonal gammopathies, and
- ✓ Describe the use of serum free light chain analysis for screening, diagnosis and monitoring disease as outlined by guidelines from the International Myeloma Working Group (IMWG) and NCCN (National Comprehensive Cancer Network).

ANNE L. SHERWOOD, PhD

Director of Scientific Affairs
The Binding Site, Inc.
San Diego, CA

Sponsored by The Binding Site, Inc.

Don't Forget!
Visit the Exhibits
12:00 to 2:30 PM

Friday, October 19, 2012

Session # 19

2:30 - 5:45 PM
3 Contact Hours
Intermediate

The 21st Century View of Chronic Lymphocytic Leukemia

Once upon a time, this was the “good” malignancy. It only affected the elderly and you died from something else. Now, it has multiple forms, different medications, can be seen in teenagers and some think might be tamed, if not cured, within the next decade. This presentation will put together a new jigsaw puzzle to picture CLL.

At the end of this session, participants will be able to:

- ✓ Explain the common presentations of CLL
- ✓ Explain the molecular underpinnings of CLL and their relationship to potential medications
- ✓ Interpret the significant laboratory data seen in diagnosis and treatment of the various CLL presentations.

SUSAN J LECLAIR, PhD, CLS (NCA)

Chancellor Professor

Department of Medical Laboratory Science University of Massachusetts
Dartmouth, MA

Session # 20

2:30 - 5:45 PM
3 Contact Hours
Intermediate

Bedbugs, Ticks and Their Not-So-Furry-Friends

If you spent a lot of time in the second half of the 20th century, you probably never heard of bedbugs, ticks, mosquitos and other small but not furry friends until now at the beginning of the 21st century where they have made a dramatic world-wide comeback. This session will focus on the natural and human-enhanced occurrence of bedbugs as well as how to identify them and curtail their presence.

At the end of this session the attendee will be able to:

- ✓ Compare presenting signs and symptoms of bug and insect encounters
- ✓ Discuss the natural history (biology/taxonomy) of these bugs and insects
- ✓ Describe the likely historical connection between ticks, bugs, etc and humans
- ✓ Explain the most effective eradication techniques.

JAMES T GRIFFITH, PhD, CLS(NCA)

Chancellor Professor and Chairperson

Department of Medical Laboratory Science University of Massachusetts
Dartmouth, MA

Friday, October 19, 2012

Session # 21

2:30 - 5:45 PM
3 Contact Hours
Intermediate

Therapeutic Monitoring and Reversal Agents for New Blood Thinners

The new blood thinner drugs present unique challenges to the laboratorian. Join us as we discuss how the newer anticoagulant drugs work and when they are used. We will talk about lab monitoring, focusing on how these agents affect common lab tests, and strategies for reversal.

At the end of this session, participants will be able to:

- ✓ Describe the newer anticoagulant drugs, how they work and when they are used,
- ✓ Discuss how these agents affect common laboratory tests and how therapeutic effect is monitored, and
- ✓ Identify strategies for reversal of the anticoagulant effect when complications occur.

MICK SCANLAN, MD

Medical Director of Transfusion Medicine and Pathology Residency Training Program
Oregon Health & Science University
Portland, OR



Luncheon for Student and First Year Professionals

Saturday, October 20, 2012, 12:00 - 1:00 pm
Holiday Inn, Portland Airport

Current MLT/MT students and recent MLT/MT graduates (within 5 years) from Region IX will meet. Current employment opportunities, job outlook, and interview process will be discussed. An update on certification maintenance and CE organizer will also be given.

This is open to student and FYP registrants attending the NWMLS.

Your Hosts will be
Maja Chloupkova
Legacy Health System
ASCLS-OR First Year Professional

Beth Zentzis
OHSU*OIT Student



Saturday, October 20, 2012

Session # 22

8:30 AM - 11:45 AM
3 Contact Hours
Intermediate

The Molecular Basis of Polycythemia Vera and Other Myeloproliferative Neoplasms

In 2005, a genetic mutation (JAK2) associated with over 90% of all patients with Polycythemia vera was announced. Since then, additional mutations have been located. Due to this knowledge, the standard laboratory tests for polycythemia have been put aside and new medications based on the molecular understanding are being studied. This presentation will focus on the explanation and treatment of these varied genetic mutations and their cellular outcomes.

At the end of this session, participants will be able to:

- ✓ Explain the role of JAK2, exon 12 and other appropriate genetic mutations in the creation of polycythemia vera, essential thrombocythemia, primary myelofibrosis and myelodysplasias
- ✓ Describe the role of SOCS1 and STAT genes in the development of myeloproliferative neoplasms
- ✓ Correlate the signs and laboratory data with the genetic anomalies

SUSAN J LECLAIR, PhD, CLS (NCA)

Chancellor Professor
Department of Medical Laboratory Science University of Massachusetts
Dartmouth, MA

Session # 23

8:30 AM - 11:45 AM
3 Contact Hours
Intermediate

The Black Horse: A Brief History of Pestilence

Humans have been associated with microorganisms since before the existence of our species (*Homo sapiens* var *sapiens*). Pestilence is quite another matter. We have NOT always had plagues, nor high efficiency kill-off from microorganisms. This session will explore our best information as to how all this began, describe some of the most notorious examples and make predictions as to the options available in our future and how they might succeed in helping us to cope with pestilence yet to come.

At the end of this session, participants will be able to:

- ✓ Describe the historic connection between humans, microorganisms and pestilence,
- ✓ Discuss factors that favor or disfavor the establishment (or continuation) of pestilence in a human population,
- ✓ List the top 10 'plagues' of all (human) time, and
- ✓ Estimate the future of human-consequence plagues.

JAMES T GRIFFITH, PhD, CLS(NCA)

Chancellor Professor and Chairperson
Department of Medical Laboratory Science University of Massachusetts
Dartmouth, MA

Saturday, October 20, 2012

Session # 24

8:30 AM - 11:45 AM
3 Contact Hours
Intermediate

Improving Work Relationships - From the Inside Out!

Working effectively with others is dependent on how well you understand human beings. "Improving Work Relationships" is a session that introduces the participant to the powerful philosophy of human behavior called "Choice Theory". Understanding what you do that hinders your ability to effectively relate to others while learning what drives everyone's behaviors including your own, will support you in improving even the most difficult relationships thus enhancing the quality of your work life. This can happen independent of anyone else doing anything different! Being able to make a change from the "inside out" is what makes this session so exciting.

At the end of this session, participants will be able to:

- ✓ State the cause of our lack of human progress in relating to others,
- ✓ Recognize habits we all use that sabotage relationships,
- ✓ Identify the 5 basic needs that drive all human behavior, and
- ✓ Apply some basic coaching skills to IMMEDIATELY improve any relationship, professional or personal.

SALLY GARDINER, CPC/RTC, MT(ASCP)

Certified Professional Coach, Reality Therapy Certified
Gladstone, OR

Session # 25

8:30 AM - 11:45 AM
3 Contact Hours
Intermediate

Phlebotomy: What Every Phlebotomist Should Know

Focusing on the skills and information useful and necessary for everyone who collects blood samples for laboratory testing, this session is invaluable to new phlebotomists, medical assistants, and nurses who collect blood samples. For the seasoned phlebotomist this material would be an excellent review.

At the end of this session, participants will be able to:

- ✓ Identify proper collection sites and restricted sites,
- ✓ Discuss how to collect quality blood samples from patients of all age groups, and
- ✓ Discuss what preanalytical variations affect test results and ultimately patient quality care.

ALICIA QUIGLEY, PBT(ASCP)

Phlebotomy and Support Services Supervisor
Adventist Medical Center
Portland, OR

Saturday, October 20, 2012

Session # 26

1:00 - 4:15 PM
3 Contact Hours
Intermediate

PNH and aHUS Disease Overview

This session will focus on PNH and aHUS disease and diagnosis overview, including ICCS Guidelines for the diagnosis of PNH (how to test, how to report, interpretation of test results). We will also review the TMA differential diagnosis and how to differentiate aHUS from TTP from HUS

At the end of this session, participants will be able to:

- ✓ Describe the serious morbidities and mortality in PNH and aHUS
- ✓ Describe how flow cytometry is used to identify PNH
- ✓ Discuss the Consequences of Chronic Hemolysis
- ✓ Explain the clinical presentations of TMA disease and how to differentiate TTP from aHUS from HUS

TINA RODRIGUEZ, MS

Diagnostic Laboratory Specialist
Alexion Pharmaceuticals
Thornton, CO

Sponsored by Alexion Pharmaceuticals

Check out the website, www.soliris.net, for more information about Alexion Pharmaceuticals work in this arena.

Session # 27

1:00 - 4:15 PM
3 Contact Hours
Intermediate

The Laboratory's Role in Pain Management Testing

We will discuss how drug screen and drug confirmations are performed, the analgesics used in pain management, drug metabolism essential to the interpretation of lab reports, adulterants, the concept of pain management as a specific medical practice and the role of the lab in supporting these clinicians. We will interpret several case-study examples in the role of a lab-support toxicologist.

At the end of this session, participants will be able to:

- ✓ Describe the practice of pain management and the difference between dependency and addiction,
- ✓ List several reasons and problems regarding urine drug testing from the clinician's perspective (to include adulteration, time of detection, sample type, opiate therapy plans, etc.),
- ✓ List and diagram the metabolites arising from the various opiate medications used in pain management, and
- ✓ List the shortcomings of immunoassays used to detect specific drug classes.

KEVIN FOLEY, PhD, MT, SC, DABCC

Northwest Regional Director of Chemistry, Toxicology, Immunology, POC
Kaiser Permanente, NW
Portland, OR

Saturday, October 20, 2012

Session # 28

1:00 - 4:15 PM
3 Contact Hours
Intermediate

Transplantation in the Era of Molecular Technology

The talk will focus on evolution of tests involved in clinical transplantation. It will cover discussions on various lab tests that are performed prior to transplantation as well as those performed to monitor the graft post-transplant. The history and evolution of these tests from serology to molecular will be discussed. In addition, the speaker will cover a series of clinical approaches taken towards improvement of transplant outcome for the past 50 years. The technical slides will present HLA, ABO, STR, and SNP.

At the end of this session, participants will be able to:

- ✓ Describe the impact of HLA mismatches in bone marrow transplantation,
- ✓ Describe the clinical relevance of incompatibility of molecular markers not traditionally tested for bone marrow transplantation, and
- ✓ Describe the impact of ABO incompatibility in kidney transplantation.

ZAHRA MEHDIZADEH KASHI, PhD, HCLD
CEO and Laboratory Director
Kashi Clinical Laboratories, Inc.
Portland, OR



EXHIBITORS & EXHIBIT HALL INFORMATION

The leading manufacturers and distributors will once again gather in the Exhibit Hall at the Columbia Conference Center (Holiday Inn, Portland Airport) to display their wares. This will be the 30th year they have participated in the Northwest Medical Laboratory Symposium to provide access for Clinical Laboratorians to the newest products and to demonstrate the ability for aiding in the diagnosis and health care of the public. In addition, Abbott Diagnostics, Beckman Coulter, bioMerieux, Siemens Healthcare Diagnostics and Sysmex will be bringing their demonstration vans displaying their larger pieces of equipment.

The vendors and their representatives are an integral part of our meeting and provide sponsorship for the continuing education sessions and other activities during this meeting. It is with the help and support from the laboratory supply companies that a volunteer group of individuals from the professional societies are able to arrange this Symposium.

As laboratory professionals, you do not have to register for the Symposium in order to view the displays in the Exhibit Hall. When you come to the Exhibit Hall, sign in on the log sheets and pick up a name tag and join the Committee in thanking the vendors for their support. The following companies have registered for space. For the latest information, please visit the the vendor websites. Links may be found at www.asclswa.org, tab NWMLS, click on "2012 NWMLS Exhibitors".

| | |
|--|---|
| Abbott Diagnostics | Interpath Laboratory, Inc. |
| Advanced Instruments | IRIS Diagnostics |
| Alere | LabReach |
| Alexion Pharmaceuticals | MediaLab, Inc. |
| Arkray USA | Medtox Laboratories |
| Audit MicroControls | Mindray Medical |
| BD Preanalytical Systems | Modern Laboratory Services, Inc |
| Beckman Coulter, Inc | m-u-t America |
| Bio Rad Laboratories | Olympus America, Inc. |
| CACMLE | Ortho Clinical Diagnostics |
| Cardinal Health Scientific Products | Quest Diagnostics |
| Cepheid | Rees Scientific Corporation |
| CompuGroup Medical | ROCHE Diagnostics |
| Delivery Express | Scientific Supply & Equipment |
| DiaSorin, Inc | Sebia, Inc. |
| EMD Millipore | Sekisui Diagnostics |
| Fisher Healthcare | Siemens Healthcare Diagnostics |
| Focus Diagnostics | Siemens Industry, Inc. |
| Global Focus Marketing & Distribution | Stago |
| Gold Standard Diagnostics | Sysmex America, Inc |
| Greiner Bio-One | The Binding Site |
| Hardy Diagnostics | Thermo Scientific, Remel, Trek Diagnostics |
| Hemocue, Inc. | Tosoh Bioscience, Inc |
| Immuno Diagnostic Systems, Inc | U.S. Army Healthcare |
| Instrumentation Laboratory | |

EXHIBIT HOURS

| | | |
|-----------------------|-----------------|--------------------|
| Wednesday, October 17 | Exhibit Opening | 12:00 PM – 2:30 PM |
| Thursday, October 18 | | 12:00 PM – 2:30 PM |
| Friday, October 19 | Exhibit Closing | 12:00 PM – 2:30 PM |

EXHIBITOR PRODUCT LIST

Abbott Diagnostics: HIV Ag/AB Combo, Vitamin D
Advanced Instruments
Alere: epoc Blood Analysis System, RALS Freecom, BinaxNOW Influenzae A & B rapid test, BinaxNOW RSV rapid test
Alexion Pharmaceuticals: Soliris (eculizumab).
Arkray USA
Audit MicroControls: Auditor QC
BD Preamerical Systems: RST, MAP, Urine Collection sets, Push Button Wingsets
Beckman Coulter, Inc.: DXH800, Dxl Access Family, AU Series, and the Demo Van
The Binding Site, Inc.: Freelite Serum Free Light Chains, SPAplus special protein analyzer
Bio Rad Laboratories: AGS HIV Combo Ag/Ab EIA 4th Gen HIV testing, Bio-Plex 2200 Automated random access multiplex testing, Unity Real Time QC Informatics, Seraclone Immunohem reagents & automation/TANGO
CACMLE: Colorado Association for Continuing Medical Laboratory Education
Cardinal Health Scientific Products: KeyPath MRSA/MSSA test, Quagen Molecular Testing, PathFast Cardiac POC Analyzer, PolyMedco IFOB Analyzer
Cepheid: Gene Xpert, Infinity 80 & 48, Systems & Solutions Lean, and Xpert CT/NG and others
CompuGroup Medical: LabDAQ Laboratory Information Systems, LabNexus Outreach Solution, 2012 Client Education Services
Delivery Express: Courier Services
DiaSorin, Inc: Vitamin D, Infectious Disease
EMD Millipore: AFS System
Global Focus Marketing and Distribution, Ltd.
Gold Standard Diagnostics: ThunderBolt Automation platform, H pylori IgG/A/M EIA, Lyme IgG/M LIA Blots, H34 Biomarker
Greiner Bio-One: Vacuette, Vacuette Premium Safety Needle System, Vacuette Quickshield Safety Tube Holder
Hardy Diagnostics: HardyChromSS HardyChrom MRSA, Anaerogro, StrepPro Grouping
Hemocue, Inc.: HB201 DM and Glucose 201 DM Analyzers
Immunodiagnostic Systems: IDS-iSYS System
Instrumentation Laboratory: GEM Premier 4000, ACL 300
Interpath Laboratory, Inc.: New Lab Facility, Consulting Service, Anatomic Pathology
IRIS Diagnostics
MediaLab, Inc: Electronic document control system
Medtox Laboratories
Mindray Medical: BS-200 Chemistry Analyzer, BC-3200 and BC-3600 Hematology Analyzers
Modern Laboratory Services, Inc: Siemens EXL and EXL 200, Siemens Centaur CP & XP, HORIBA Pentra 200 & 400, Sysmex XS 1000i & xs 1000 iAL
mut America: MK2 Sorter
Olympus America, Inc.: BX46 Microscope, BX43 Microscope, DP21 Digital Camera
Quest Diagnostics: Reference Testing: Vitamin D-LC/MS/MS, Thyroblogulin, Testosterone -LC/MS/MS, and Prescription Drug Monitoring
Rees Scientific Corporation
Remel (Part of Thermo Fisher Scientific)
ROCHE Diagnostics: Demo Van
Scientific Supply & Equipment
Sebia, Inc: Capillars Flex
Sekisui Diagnostics: OSOM Products C diff, Strep A, Trichomonas, and VB (formerly Genzyme Diagnostics)
Siemens Healthcare Diagnostics: Demo Van
Siemens Industry, Inc.
Stago: Coag Connexion, Compact Plus, and Fibrin Monomer
Sysmex America
Thermo Scientific, Remel and Trek Diagnostics
Tosoh, Bioscience, Inc.
U.S. Army Health Care Recruiting Team - Vancouver

List is updated as more companies sign up to exhibit. Check the website, www.asclswa.org, for links to each company's website

For Exhibit Information: Contact Brenda Kochis, Email: BrenKoch@comcast.net

Registration Terms and Conditions

Fees are listed for each category. To ensure adequate processing time, please postmark your registration by **October 1, 2012 to insure it will arrive on time**. Lunch will not be guaranteed to on-site registrants.

Lunch is included in the registration fee for persons who are preregistered for an AM **and** a PM session on the same day. Lunch is **not** provided for registrants that sign up only for an AM or PM session or who register on-site.

Attendance Categories

Member: Any person who is a current member in good standing of the American Society for Clinical Laboratory Science (ASCLS) or the American Medical Technologists (AMT). Please list your membership number in the appropriate space on the registration form. Anyone joining ASCLS and mailing the completed membership application is eligible for member rates. Please include a copy of the membership form with your registration.

Student: A student is defined as any person who is engaged at least half-time in a recognized program leading to either an associate's or bachelor's degree in a clinical laboratory science or one who is in a recognized Clinical Laboratory Internship program.

Phlebotomist: A phlebotomist is defined as any person whose primary responsibility is phlebotomy. AMT's RMA are eligible for Phlebotomist Member fees.

Payment: Full payment in U.S. Dollars must accompany all registrations. Please submit a check for the appropriate payment according to the category that you qualify for. Those registrations without full payment will be held and the registrant notified. Checks must be made payable to "NWMLS." The bank will not accept checks made payable to any other name. The registration will not be processed until full payment to NWMLS is received in U.S. Dollars. No unpaid registrations or credit card registrations can be accepted.

The seminar committee reserves the right to limit registration and cancel any session prior to the seminar should circumstances make it necessary. If a session is cancelled, the registrant may attend another session or receive a refund. Otherwise, due to convention center and session expense obligations, NO REFUNDS are permitted.

Handouts ONLY Available On-line: To keep registration rates as low as possible, the NWMLS will no longer provide copies of the session handouts on-site at the meeting. Session handouts will be available for download at the ASCLS-WA website (<http://www.asclswa.org>). Click on the "NWMLS" tab. Handouts for the sessions will be available approximately 2 weeks prior to the meeting in a password protected area. Register early so that you can print the handout material for your sessions. You will receive the "password" and instructions on how to print the handouts. The email will be from BrenKoch@comcast.net, so watch for it. Remember to print copies of the handouts for the sessions for which you registered and bring them to the meeting with you. No handouts will be provided onsite. If you are having problems downloading the handout, please contact Brenda Kochis, email is BrenKoch@comcast.net.

Registration Questions

For registration questions or information contact:

Edna Anderson
1397 Redwood St NW
Salem, OR 97304-1940

Phone: 503-364-5645 (please leave message if no answer)

E-mail: EMA46@comcast.net

You will receive a confirmation in the email that is sent regarding handout access. Please write your email address clearly. Your receipt will be in your registration packet.

2012 Northwest Medical Lab Symposium

October 17 - 20, 2012
Holiday Inn, Portland Airport

Please Postmark by October 1, 2012

PLEASE PRINT AND SHOW NAME AS WANTED ON NAME TAG

First Name _____ Last Name _____
 Address _____
 City/State/Zip _____
 Day Phone _____ Evening Phone _____
 Institution _____
 City/State _____
 E-Mail Address _____

Would you be willing to serve as Moderator for any of the sessions you will be attending?

Please circle response.
 Yes No

Please circle sessions you wish to attend.

| | | | | | |
|-------------------------|----|----|----|----|----|
| Wednesday October 17 | AM | 1 | 2 | 3 | |
| | PM | 4 | 5 | 6 | |
| Thursday October 18 | AM | 7 | 8 | 9 | 10 |
| | PM | 11 | 12 | 13 | 14 |
| Friday October 19 | AM | 15 | 16 | 17 | 18 |
| | PM | 19 | 20 | 21 | |
| Saturday October 20 | AM | 22 | 23 | 24 | 25 |
| | PM | 26 | 27 | 28 | |

Full-Day Preregistration INCLUDES Lunches

Check if you have special dietary needs:
 Vegetarian _____
 Gluten Free _____

ADVANCED REGISTRATION FEE SCHEDULE

| | | | |
|--|--------------------|-----------------|--------------------------|
| Member ASCLS or AMT (Membership #: ASCLS _____ AMT _____) | | | |
| Technical/Administrative Professional | | | |
| | Full Day | _____ days | @ \$100.00 \$ _____ |
| | Half Day | _____ half days | @ \$50.00 \$ _____ |
| Phlebotomist/RMA/COLT | | | |
| | Full Day | _____ days | @ \$60.00 \$ _____ |
| | Half Day | _____ half days | @ \$30.00 \$ _____ |
| Student | | | |
| | Full Day | _____ days | @ \$40.00 \$ _____ |
| | Half Day | _____ half days | @ \$20.00 \$ _____ |
| NonMember | | | |
| Technical/Administrative Professional | | | |
| | Full Day | _____ days | @ \$160.00 \$ _____ |
| | Half Day | _____ half days | @ \$80.00 \$ _____ |
| Phlebotomist | | | |
| | Full Day | _____ days | @ \$80.00 \$ _____ |
| | Half Day | _____ half days | @ \$40.00 \$ _____ |
| | Total | | \$ _____ |

Mail to: Edna Anderson
 1397 Redwood St NW
 Salem, OR 97304-1940

Full Payment must accompany all registrations. Remit in U.S. dollars. Make check payable to **NWMLS**.

E-mail: EMA46@comcast.net

Please Postmark by October 1, 2012

Interested in joining ASCLS?

You can get member rates for this meeting!

All registrants have the opportunity to join ASCLS and receive member registration rates. You can go to www.ascls.org and click on "Join ASCLS" in the box to the left. There you will find the New Member Application. By joining through the ASCLS website, you will have your member number immediately. No waiting for snail mail.

Interested in Joining the American Medical Technologists

Yes, I want to become a member of the American Medical technologists. Please mail me further information about AMT, along with a Membership Application Form.

Name _____

Telephone: Home _____ Work _____

Address _____

City/State/Zipcode _____

Employer _____

Students: name of Institution where enrolled: _____

Major or name of training program: _____

Mail to : Edna Anderson
1397 Redwood St NW
Salem, Oregon 97304-1940

Special Notes

General Information

Casual dress is appropriate for all sessions. There will be no smoking in any of the sessions.

Your name badge is required for admission to all sessions and to the Exhibit Hall. Please wear your name badge at all times.

Session Pass and Meeting Room Assignments

The session room assignments will be printed on the session sheet in your registration packet. A floor plan will be available at the registration desk.

Hospitality

In keeping with tradition, all exhibitors will participate in combined hospitality functions in the Exhibit Hall. **There will be no individual hospitality suites.**

Message Center

A message board will be maintained at the registration desk for Emergency messages. The phone number Holiday Inn, Portland Airport is 503-256-5000.

Cell phone for the registration chair is 503-949-6269. Please leave a message if not answered.

Updates

Updates will be posted on the website at www.asclswa.org
Please check for session updates and or cancellation information.

P.A.C.E.® / AMTrax

P.A.C.E.® and AMTrax credits have been approved for all appropriate sessions.

ASCLS-OR is approved as a provider of continuing education programs in the clinical laboratory sciences by the ASCLS P.A.C.E.® program. ASCLS-OR will use CE Organizer for documentation of continuing education credits. Please make note of the P.A.C.E.® number and of the session number that will be given to attendees in each session after the session break. Without this information, the attendee will not be able to obtain their electronic certificate.

ORSSAMT is the approved provider for AMTrax CECs and insures that these educational presentations confirm to standards established by AMTrax.

Handouts ONLY Available On-line

To keep registration rates as low as possible, the Spring Seminar will no longer provide copies of the session handouts on-site at the meeting. Session handouts will be available for download at the ASCLS-WA website (<http://www.asclswa.org>). Click on the "Spring Seminar" tab. Remember to print copies of the handouts for the sessions for which you registered and bring them to the meeting with you. **No handouts will be provided onsite.** If you are having problems downloading the handout, please contact Brenda Kochis, BrenKoch@comcast.net.

Handouts for the sessions will be available on the ASCLS-WA website approximately 2 weeks prior to the meeting in a password protected area. You will receive the "password" and instructions on how to print the handouts approximately 2 weeks before the meeting. The email will be from BrenKoch@comcast.net, so watch for it. Register early so that you can print the handout material for your sessions. Handouts will NOT be provided for those that register onsite. If you plan to register onsite, please contact Brenda Kochis at BrenKoch@comcast.net for information re handout access.

Sessions at a Glance

| | | | | | |
|---|-------------------------------------|--|---|--|--|
| Wednesday, October 17 | AM | 1 | 2 | 3 | |
| | | Proficiency Testing in Lab Quality POC Strategies | Impact of On-Demand PCR Testing | Research and Clinical Trial Primer | |
| | Exhibits: 12:00 PM – 2:30 PM | | | | |
| | PM | 4 | 5 | 6 | |
| | | Acute Lymphoblastic Leukemia | Blasts and Other Cells Infectious Mono and Other EBV | Molecular Approaches of Disease Newborn Screening | |
| Thursday, October 18 | AM | 7 | 8 | 9 | 10 |
| | | CLIA Update: Competency and EP23 | Thyroid Disorders | Bodacious Body Fluids Don't Be Afraid, It's Just a Body Fluid | Flow Cytometry: Making Sense of Fluorescence |
| | Exhibits: 12:00 PM – 2:30 PM | | | | |
| | PM | 11 | 12 | 13 | 14 |
| | | Update on Iron Metabolism | Leading the Millennial Generation | Billing for POC Testing | Systemic and Organ-Specific Autoimmunity |
| Friday, October 19 | AM | 15 | 16 | 17 | 18 |
| | | Future of Clinical Lab Science | Healthcare in Russia and China | QC Management and QC for Infectious Disease Testing | Myeloma Patient: New Screening Updates |
| | Exhibits: 12:00 PM – 2:30 PM | | | | |
| | PM | 19 | 20 | 21 | |
| | | 21st Century View of Chronic Lymphocytic Leukemia | Bedbugs, Ticks and Their Not-So-Furry Friends | Therapeutic Monitoring and Reversal Agents for Blood Thinners | |
| Saturday, October 20 | AM | 22 | 23 | 24 | 25 |
| | | Molecular Basis of Polycythemia vera and Other Myeloproliferative Diseases | Brief History of Pestilence | Improving Work Relationships | What Every Phlebotomist Should Know |
| | PM | 26 | 27 | 28 | |
| | | PNH and aHUS Disease Overview | Lab Role in Pain Management | Transplantation in Era of Molecular Technology | |
| Thank you for coming to the 2012 NWMLS | | | | | |